





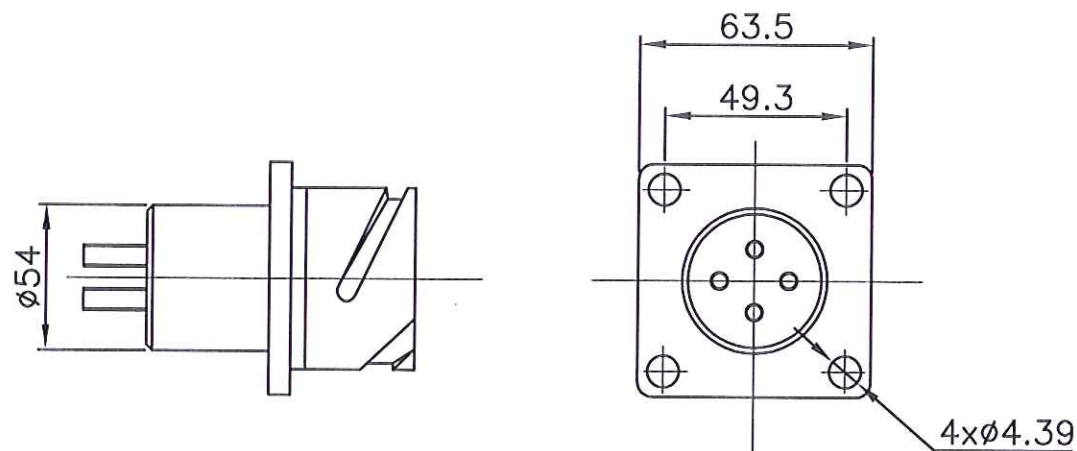


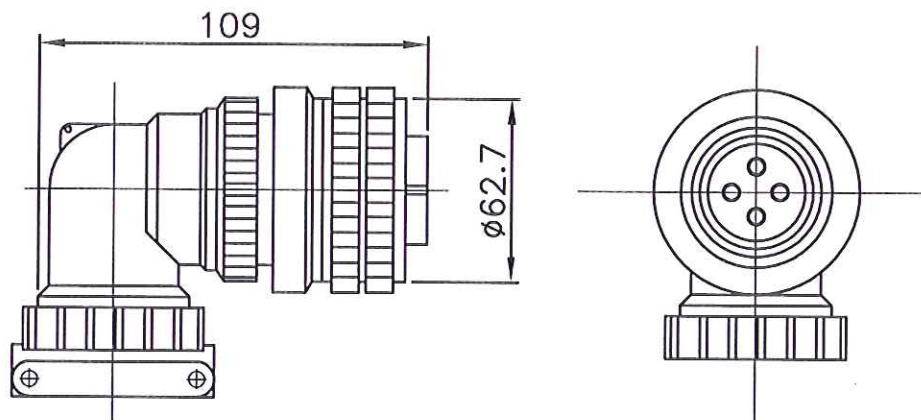
COPY RIGHT & CONFIDENTIAL THIS DOCUMENT IS THE EXCLUSIVE PROPERTY OF BEML & CONTAINS CONFIDENTIAL INFORMATION. THIS DOCUMENT OR ITS CONTENTS SHALL NOT BE USED, REPRODUCED OR DISCLOSED IN WHOLE OR IN PART, WITHOUT PRIOR WRITTEN PERMISSION OF BEML. THIS DOCUMENT & ALL ITS COPIES SHALL BE RETURNED TO BEML ON DEMAND DRAWING RELEASED FROM PLM. PHYSICAL SIGNATURE NOT REQUIRED

SURFACE ROUGHNESS	GRADE No.	N12	N11	N10	N9	N8	N7	N6	N5	N4	N3	N2	N1
	VALUE	50	25	12.5	6.3	3.2	1.6	0.8	0.4	0.2	0.1	0.05	0.025
	SYMBOL												

4 PIN PLUG AND SOCKET (BAYONET TYPE)



RECEPTACLE



PLUG

NOTE :

PLUG AND RECEPTACLE SHOULD BE PROCURED FROM SAME SOURCE.

MACHINING DEVIATIONS FOR LINEAR DIMENSIONS	RANGE	0 - 6	6 - 30	30 - 120	120 - 315	315-1000	1000-2000	2000-4000	ABOVE 4000	RA
	TOLERANCE	±0.1	±0.2	±0.3	±0.5	±0.8	±1.2	±2	±3	~
FOR DIMENSIONAL TOLERANCES OF SHEET METAL PARTS AND WELDED STRUCTURES, REFER STD. RD-227										
UNSPECIFIED TOLERANCE FOR LINEAR AND ANGULAR DIMENSIONS REF. IS 2102 (PT-1) (MEDIUM)							QUALITY OF WELD JOINTS REF. RD 230 MEDIUM			
VALUES OF SURFACE TEXTURE SHALL BE AS PER COMPANY STD DS. 1012.C.							STATUS:			
WELDING SHALL BE CARRIED OUT AS PER IS: 9595-96										

TECHINICAL SPECIFICATION :-

1. SHELL HOUSING TYPE - BAYONET TYPE
2. SHELL HOUSING MATERIAL - ALUMINIUM ALLOY
3. SHELL PLATING - OLIVE DRAB CADMIUM
4. INSULATOR - POLYCHLOROPRENE
5. CONTACTS - COPPER BASE ALLOY- SILVER PLATED CRIMP TYPE (FEMALE & FEMALE))
6. OPERATING TEMPERATURE -55°C TO +125°C.
7. INSULATION RESISTANCE 5000 Meg. Ohms Min. @ 500V DC
8. NO. OF CONTACTS - 4
9. CONTACT SIZE - 0
10. SERVICE RATING A (RATED WORKING VOLTAGE - 700 V DC)
11. CURRENT RATING - 90 A
12. 90° ANGLE CONNECTOR PLUG WITH CABLE CLAMP AND TELESCHOPIC BUSHING

UN CONTROLLED

VENDOR :-

SL. NO.	MAKE	TYPE	PART NO.
1	AMPHENOL	RECEPTACLE	ADGC 02A 36-5 S + AMDC-36
		PLUG	ADGC 08A 36-5 P
2	ALLIED ELECTRONICS	RECEPTACLE	MG 02R 36-5S A30 + MG 02 36 CC
		PLUG	MG 08F 36-5P A30

SL.No.	QTY	PART / STOCK No.	DESCRIPTION	SIZE	COMPANY STD./IS	Wt. (Kg)
△			PRODUCT	8W DH I&M CAR - MRVC		
			REF DRG			
△			MATERIAL			
			HEAT TREAT.	APPD	25/6/14	
△			SURFACE TREAT.	REVD	25/6/14	
			TITLE	CHKD	25/6/14	
△			4 PIN SOCKET WITH PLUG	DRWN	25/6/14	
				SCALE		
△			BEML BEML LIMITED	SHEET	OF	Wt.(Kg)
				DRG No.	899-21195	ALT
ALT.NO.	ECN NO/CHANGES	DATE	BY	CHKD	APPD	